

# the Wheelagram



Materials Cleaning Systems Division  
**Wheelabrator-Frye Inc.**

VOL. VII NO. 4  
MARCH 29, 1985

## STEERING COMMITTEE BRIEFS EMPLOYEES ON E.I. STATUS

During the month of February, members of the E.I. Steering Committee conducted small group meetings for all employees, to help better acquaint them with Employee Involvement here at WFI.

Pictured here are several Steering Committee members conducting these briefings:



### SERVICE MILESTONES

#### 1 YEAR

Connie Brady  
Vicki Burkowski  
Rick Campoli  
Jon Christofeno  
Debbie DeGeyer  
Lorrie Doyle  
Don Ellingson  
Cindy Kronewitter  
Jim Richey  
Dennis VanSkyHawk  
Harold Wiegand

#### 10 YEARS

Shirley Clark  
Warren Henke  
Lillian Stanifer

#### 25 YEARS

Duane Drake

### JULIANNA CLUB COORDINATES DAFFODIL DAY

Thanks to the **Julian-  
na Club** officers, who took advance orders from co-workers, Daffodil Day at Wheelabrator was a major success!



Pictured below is Julianna Club president, **Connie Goss**, taking flower orders from **Walt Wolf**, **Doris Grindelnd** and **Dave Molnar**.

Proceeds from Daffodil Day went to the American Cancer Society for their research efforts.

## 1985 HOLIDAY SCHEDULE

Our current holiday policy provides for nine paid holidays per year.

In developing the holiday schedule for 1985, eight of these nine holidays have been traditionally observed at our facility and appear below as holidays for 1985.

| HOLIDAY                | DAY       | DATE        |
|------------------------|-----------|-------------|
| New Year's Day         | Tuesday   | January 1   |
| Good Friday            | Friday    | April 5     |
| Memorial Day           | Monday    | May 27      |
| Independence Day       | Thursday  | July 4      |
| Labor Day              | Monday    | September 2 |
| Thanksgiving Day       | Thursday  | November 28 |
| Day After Thanksgiving | Friday    | November 29 |
| Christmas Day          | Wednesday | December 25 |

The final holiday which will in all likelihood be during the Christmas season has yet to be determined. It will, however, be announced as soon as a decision is made.

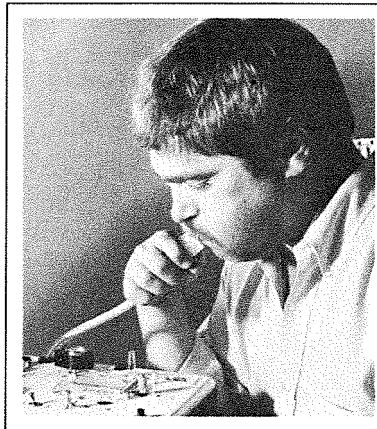
## HOW GOOD IS YOUR MEMORY?

How many of the following messages can you remember from recently posted Action Posters?

- Let's get the rough jobs over with — putting them off only makes them harder.
- Concentration prevents mistakes.
- Let's never be afraid to try! Learning a new skill might yield a lifetime of opportunity!
- Care, Quality & Service add up to satisfied customers and better jobs!
- Sharing the burden lightens the load — Let's lend a hand wherever we can!
- Let's not give up 'till the job's done right!
- Let's make it a point to be on time! Even a few minutes can make a difference!

Let's all get behind the effort to put these messages into practice. By using them we're each taking positive steps to help increase productivity, reduce costs and improve quality!!

# You Work Hard For Your Money



## Why Blow It?

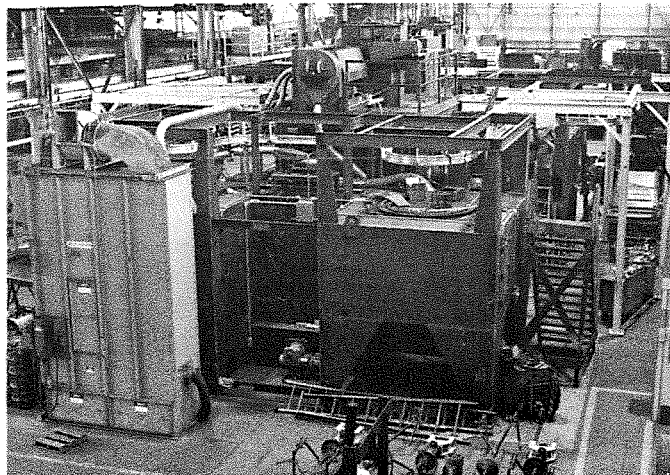
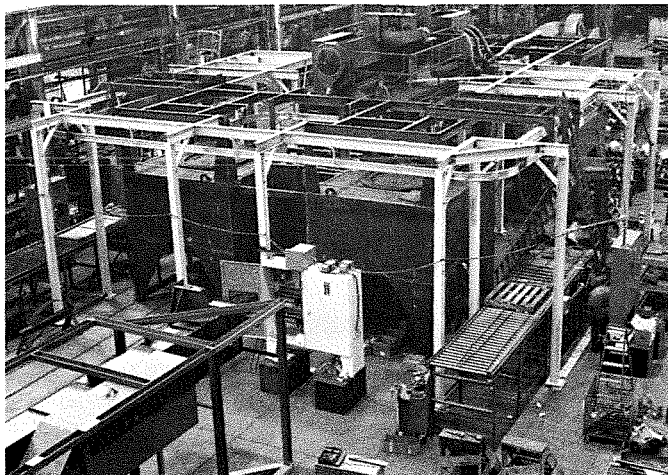
Drunk driving costs big money. The very least you will pay is \$2,000; you may pay as much as \$10,000. But drunk driving can cost you more than money. You can lose your job, your reputation, and your peace of mind.

Knowing your limits is even smarter than knowing the price.

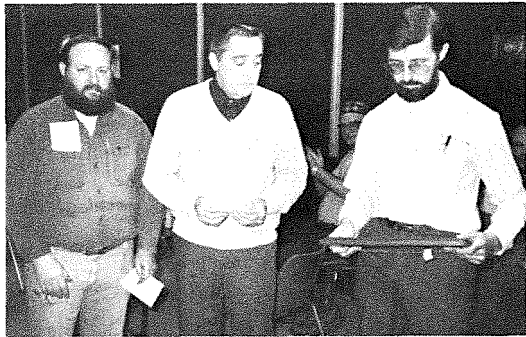
**Sobering Advice  
can save a life**

The Governor's Task Force to Reduce Drunk Driving

A dual four (4) wheel power and free monorail system is currently under construction on our main assembly floor. The magnitude of assembly marks an historic event for Wheelabrator. The machine is designed to deflash aluminum transmission housings at a rate of 450 per hour.



## CO-WORKERS CONVEY BEST WISHES TO RETIREES



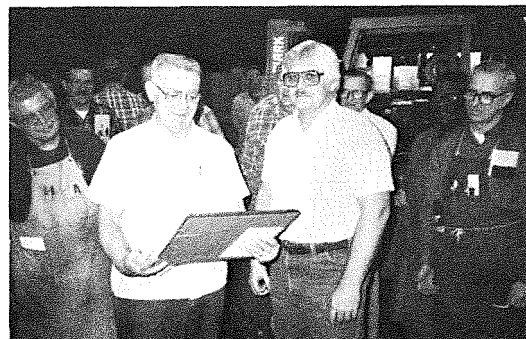
**L. J. DAVENPORT**  
Inspection



**CLIFF MARTIN**  
Maintenance



**BOB MELKEY**  
Customer Service



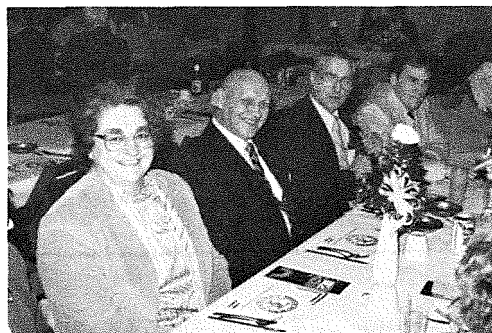
**EVERETT WILLIAMS**  
Stores

OTHER RETIREES NOT ON CAMERA INCLUDE: LEVI HIMES — FABRICATION,  
C. GLENN MARTIN — FOUNDRY, ALICE MIKEL — BALCRANK,  
DON MILLER — PRODUCTION CONTROL

## WFI CREDIT UNION MERGES WITH TEACHERS

At the 11th Annual Meeting of WFI Federal Credit Union, held on March 9th at the South Bend Turners Club, the membership of the Credit Union approved the merger of WFI Federal Credit Union with Teachers Credit Union. The merger is scheduled for April 1, 1985. As of that date all current members of WFI Federal Credit Union will become members of Teachers Credit Union with all the privileges and services available to them that are currently offered by Teachers Credit Union.

Any questions concerning the new Credit Union services available to current members can be addressed to any of the nine Teachers Credit Union service offices or call 232-8011. Membership in Teachers Credit Union is available to any current, future, or retired Wheelabrator-Frye employee.



Pictured above are several snapshots that were taken by our roving photographer **Ray LaDow** during the evening's activities.

